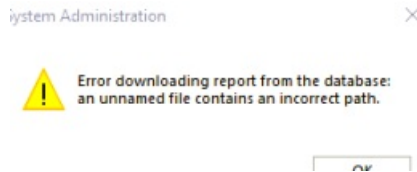


When running a report, error message states "an unnamed file contains an incorrect path."

Last Modified on 11/14/2024 12:39 pm EST

Symptom: Error Downloading report from the database: an unnamed file contains an incorrect path.



Cause: When trying to preview or print any report in System Administration the error would come up

Resolution: Found the ISO location and went to the crystal file location /windows/temp and reinstalled Crystal Reports.

Applies To: OG 7.4.457.468 (update 3) and up

Additional Information: Made sure ODBC was connected to server and got a successful connection. Made sure Configuration Editor had the proper information in it and was using Lenel user instead of windows authentication.

Created a test report and selected one of the premade .rpt files and replicated that reports types, tried to preview it and still saw the error

© 2024 Honeywell International Inc. All Rights Reserved.
